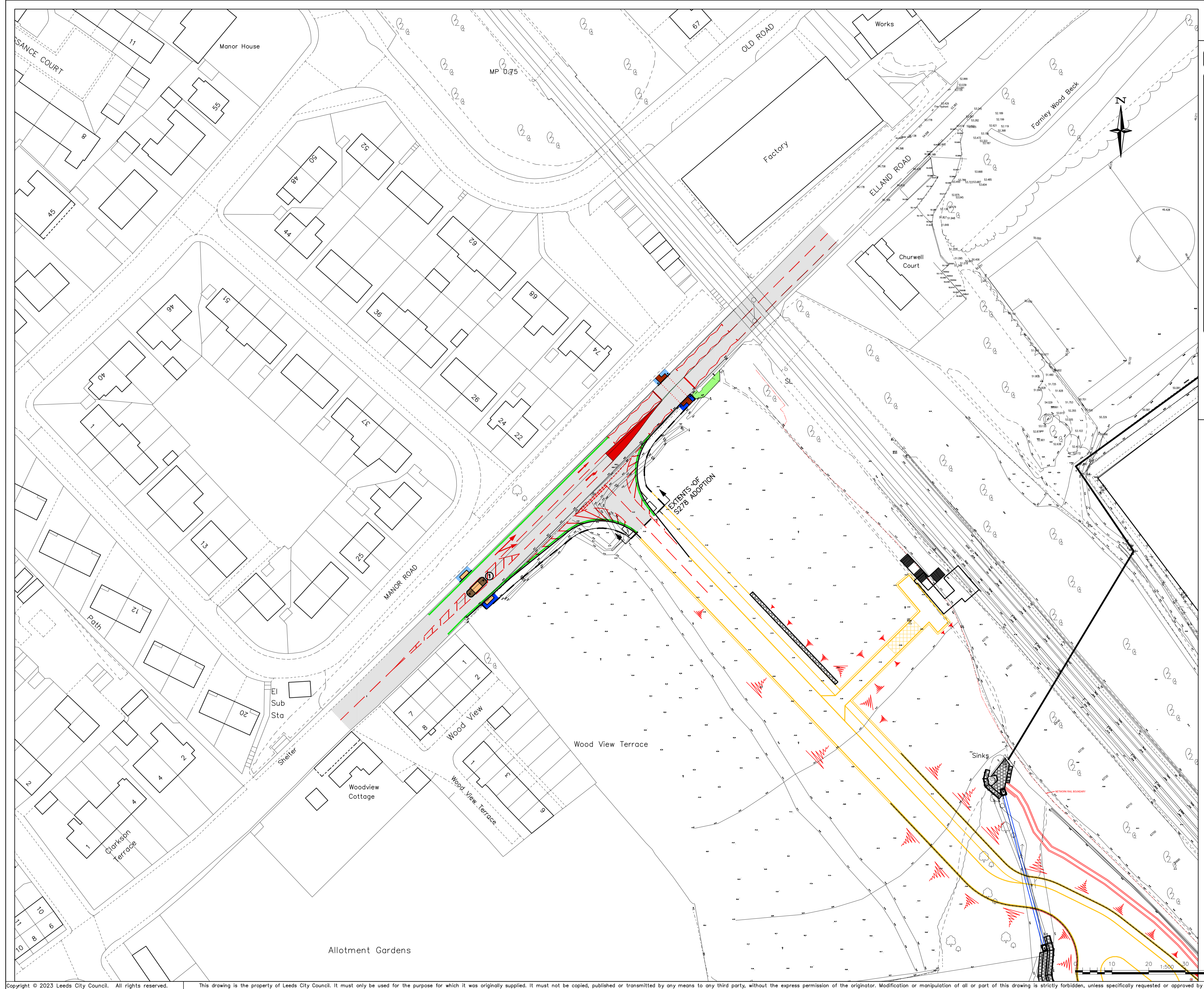


© Crown copyright and database rights 2022 OS LA100019567. You are granted a non-exclusive, royalty free, revocable licence solely to view the Licensed Data for non-commercial purposes for the period during which Leeds City Council makes it available. You are not permitted to copy, sub-license, distribute, sell or otherwise make available the Licensed Data to third parties in any form. Third party rights to enforce the terms of this licence shall be reserved to OS.



KEY

- NEW CARRIAGEWAY
- CARRIAGEWAY RESURFACING
- CARRIAGEWAY ISLAND
- NEW FOOTWAY
- FOOTWAY RESURFACING
- CONTROLLED CROSSING (RED TACTILES)
- UNCONTROLLED CROSSING (BUFF TACTILES)
- LANDSCAPE/GRASSED/PLANTED
- DOUBLE YELLOW LINES

Notes:

1. This drawing is for information only. See relevant Contract Drawings for actual construction details and proposed works.

P03 Central hatch and zig zag lines amended	RGS	LH	5/23	LH
P02 Double yellow lines added, footway extents reduced at crossings, carriageway surfacing extended into bellmouth.	RGS	LH	3/23	LH
P01 First issue	RGS	LH	2/23	LH
REV		DRAWN	CHECK	DATE

CREATED BY:	RGS	2/23	CURRENT ISSUE:	LH	5/23	LH	5/23
				CHECKED		CDE	APPROVAL

PURPOSE OF ISSUE: **WORK IN PROGRESS**

APPROVAL STATUS: **APPROVED** CDE STATUS: **S0**

ELLAND ROAD, CHURWELL - RAIL STATION S278 HIGHWAY WORKS

PROPOSED LAYOUT



1:500	ORIGINAL SHEET SIZE	A1
733491-LCC-HWT-ER-DR-CH-MIS_01	REV:	P03
May 2023	ID:	-